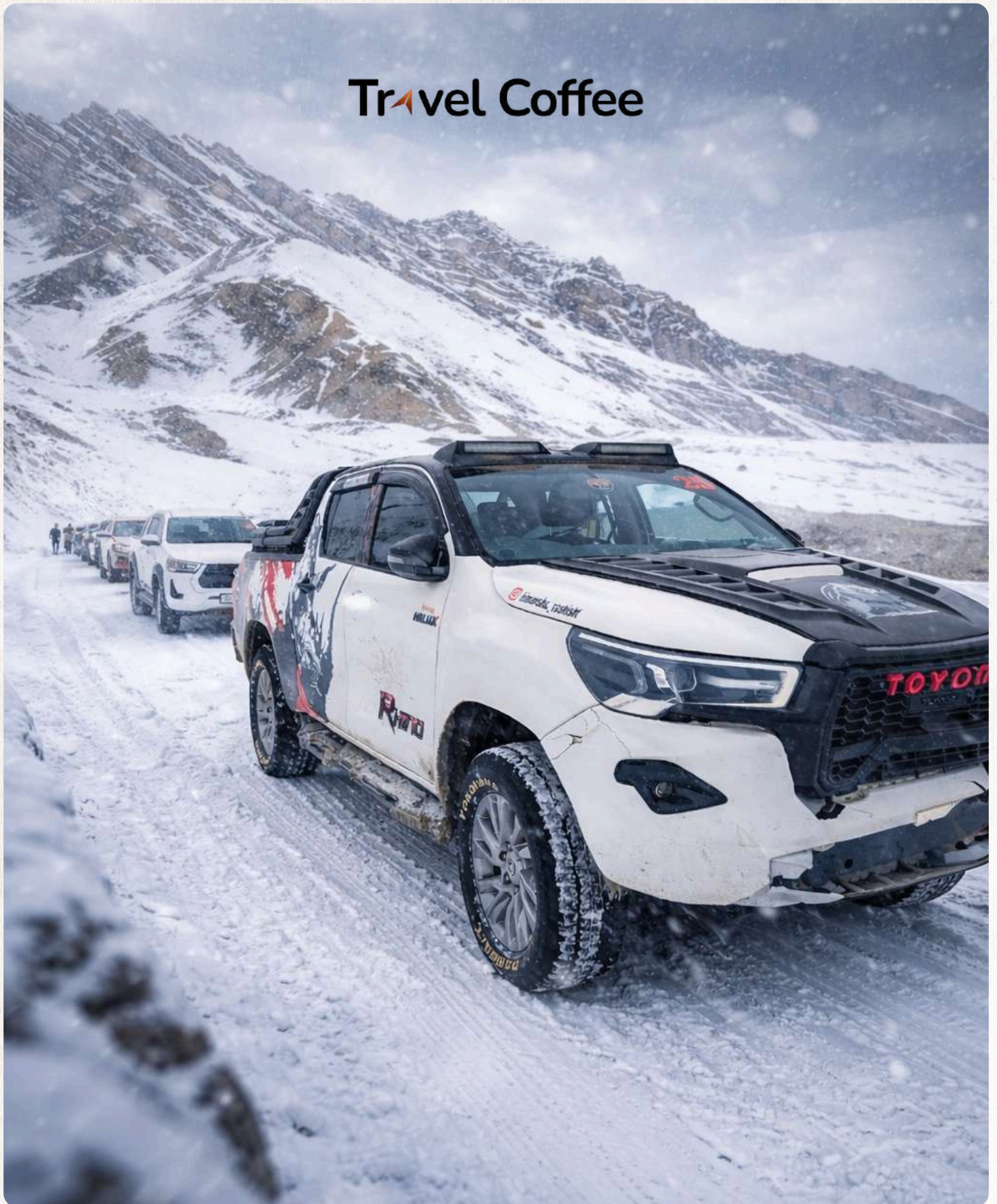


Travel Coffee



# WINTER SPITI 4x4 EXPEDITION

08 Nights/ 09 Days

---

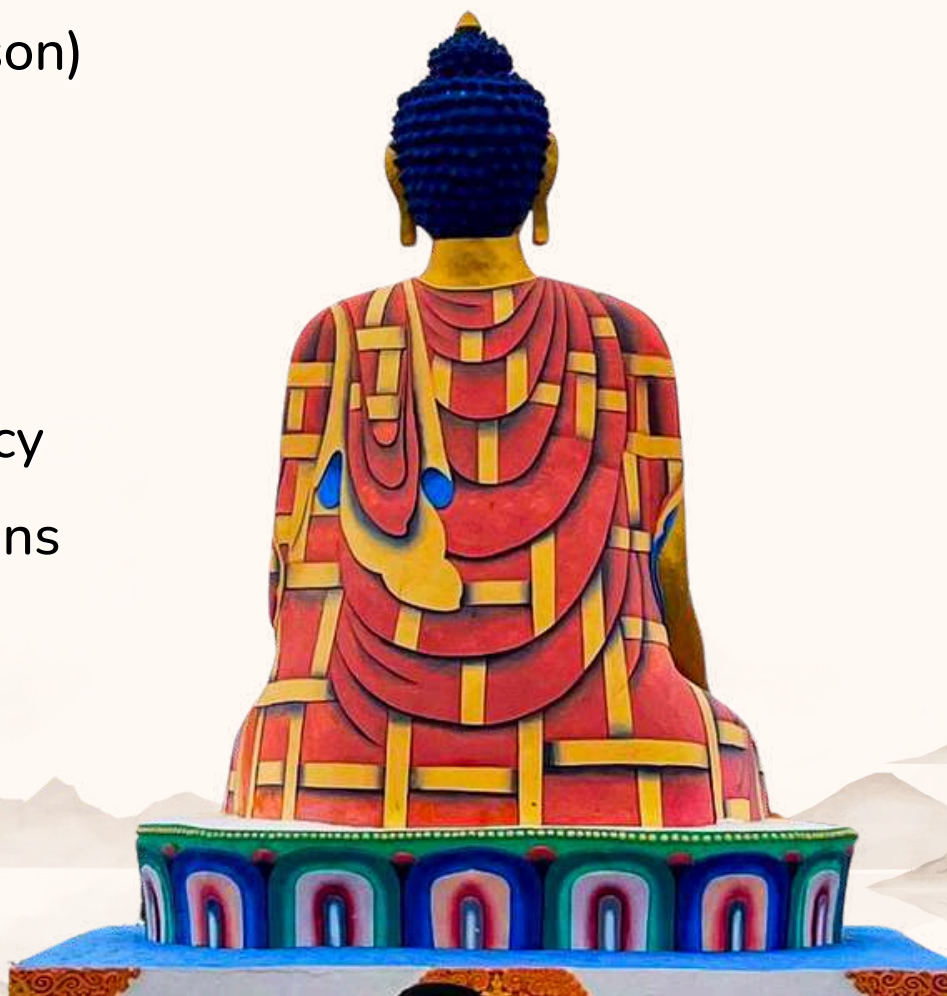
Limited seats per batch



# TABLE OF CONTENTS



- 01 Brief Itinerary
- 02 Why Travel Coffee
- 03 Trip Highlights
- 04 Detailed Itinerary
- 05 Customer Reviews
- 06 Inclusions
- 07 Exclusions
- 08 Costing (Per Person)
- 09 Booking Process
- 10 Batch Dates
- 11 Things to Carry
- 12 Cancellation Policy
- 13 Terms & Conditions





# BRIEF ITINERARY



## 09 DAYS | Delhi to Delhi

### ✦ Day 1

Delhi → Shimla | Overnight Journey (Volvo)

### ✦ Day 02

Shimla → Chitkul/Sangla (225 Kms, 9 Hrs Drive)

### ✦ Day 03

Chitkul/Sangla → Kalpa (50 Kms, 3 Hrs Drive)

### ✦ Day 04

Kalpa → Tabo (160 Kms, 5 Hrs Drive)

### ✦ Day 05

Tabo → Kaza (48 Kms, 2 Hrs Drive)

### ✦ Day 06

Spiti Sightseeing Day  
(Komik, Hikkim, Langza, Key, Chicham.)

### ✦ Day 07

Kaza → Kalpa (200 Kms, 7 Hrs Drive)

### ✦ Day 08

Kalpa → Shimla (Approx. 224 Kms | 8–9 hrs Drive) → Overnight Volvo to Delhi

### ✦ Day 09

Delhi Arrival | Tour Ends





# WHY TRAVEL COFFEE?



Travel Coffee is a Himachal-based local travel brand built for the mountains not for brochures. In Winter Spiti, that difference matters. We plan routes around live snow and road updates, move with a strong on-ground network, and stay available 24×7 through the expedition from quick reroutes to emergency coordination when needed.

*We don't treat Spiti like a destination.  
We treat it like home.*





# DAY 01

## DELHI TO SHIMLA | OVERNIGHT JOURNEY

*The night we leave the noise behind.*

- Assemble in the evening (approx. 9:00–10:00 PM)
- Overnight Volvo journey towards Shimla







## DAY 02

### SHIMLA TO CHITKUL/SANGLA | (225 KMS, 9 HRS DRIVE)

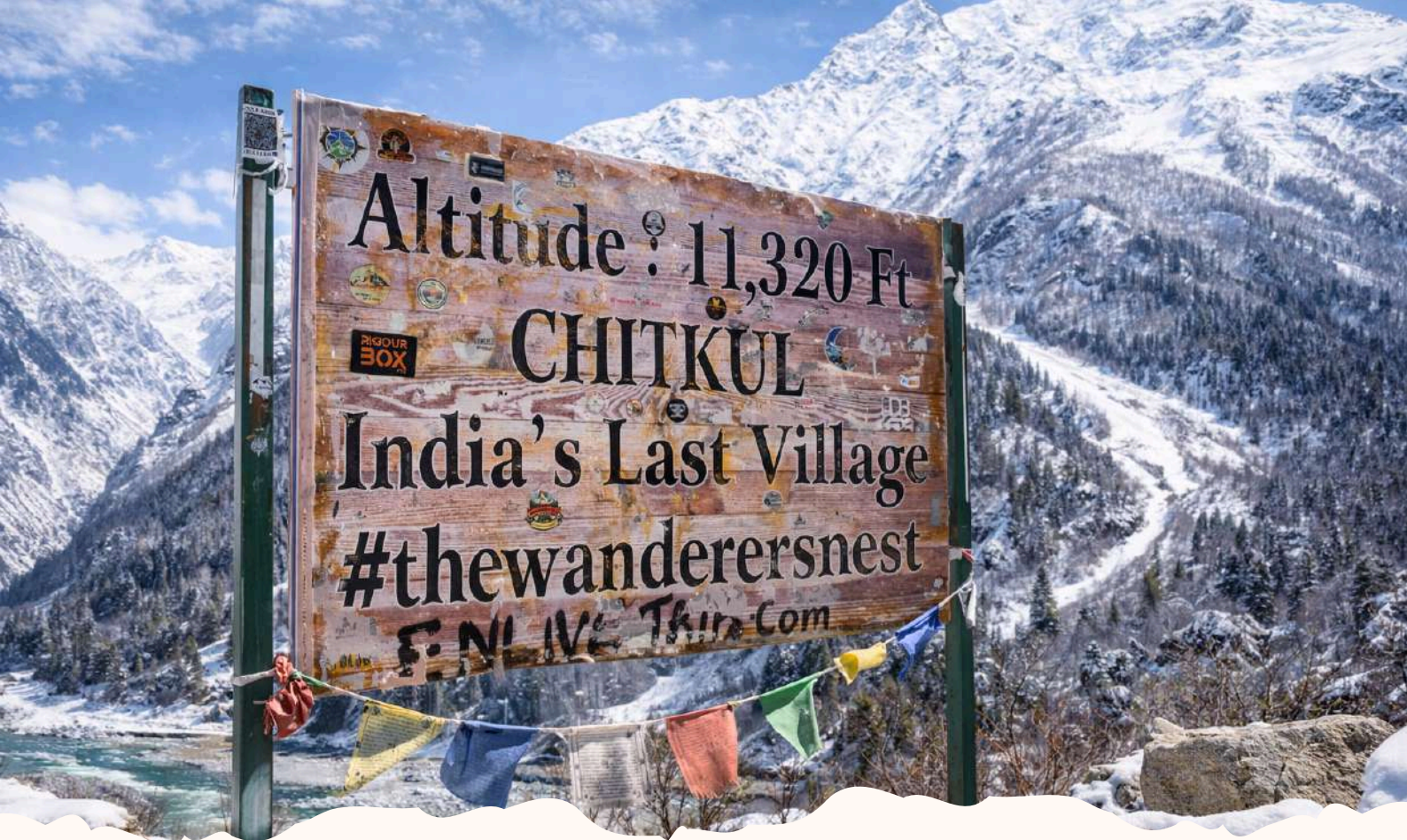
*Winter roads, first mountain signs.*

- Breakfast stop near Shimla, then start the climb
- Scenic winter drive via Kufri & Narkanda belt
- Photo stop at Tani Jubbar Lake (Narkanda side)
- En-route scenic breaks at Sutlej valley viewpoints (Rampur side)
- Quick stop at Jeori / Wangtu belt for stretch + chai (as per conditions)
- Enter the Kinnaur landscape — river bends, cliffs, and the “mountains change here” feel
- Reach Sangla Valley by evening
- If road conditions allow: short Chitkul visit (or keep Chitkul for Day 3 morning)
- Overnight: Chitkul/Sangla (as per plan)

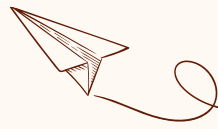
**Highlight:** The first big winter drive + Kinnaur valley entry







## DAY 03



### CHITKUL/SANGLA TO KALPA | (50 KMS, 3 HRS DRIVE)

*A softer valley, a slower breath.*

- Early morning views in Baspa Valley
- If not covered on Day 2: Chitkul visit in the morning (weather permitting)
- On the way: Rakcham viewpoints / Baspa river bends photo stops
- Drive via Karcham / Wangtu belt (scenic hydro valley stretch)
- Arrive Kalpa by afternoon/evening
- Time permitting: sunset viewpoints with Kinnaur Kailash backdrop (weather permitting)
- Overnight: Kalpa

**Highlight:** Kalpa's calm after the road







## DAY 04

### KALPA TO TABO | (160 KMS, 5 HRS DRIVE)

*The gateway into Spiti.*

- Start early — daylight matters in winter
- Drive down towards the Spiti entry side
- Stop at Khab Confluence (Sutlej meets Spiti — landscape shifts here)
- Drive through the dramatic curves of Ka Loops
- Visit Nako Lake / Nako village (weather permitting)
- Reach Tabo by evening
- Visit Tabo Monastery (time/conditions permitting)
- Overnight: Tabo

**Highlight:** When Spiti begins to feel like another planet



Travel Coffee





## DAY 05

### TABO TO KAZA | (48 KMS, 2 HRS DRIVE)

*Monasteries, cliffs, and your first Spiti base.*

- Breakfast and depart
- Visit Tabo Monastery (if not covered previous evening)
- Stop at Dhankar viewpoint / monastery (subject to road/ice conditions)
- Arrive Kaza — Spiti HQ
- Free time: market walk, cafés, local wool shopping
- Overnight: Kaza

**Highlight:** First proper night in Kaza







## DAY 06

### SPITI SIGHTSEEING DAY (KOMIK, HIKKIM, LANGZA, KEY, CHICHAM)

*The Postcard & Monastery Day — if winter allows it.*

- Day trip to Spiti's high villages (route depends on snow)
- **Hikkim:** Postcard stop
- **Komik:** One of the highest villages (if accessible)
- **Langza:** Buddha statue + wide valley views
- **Key Monastery** – The largest and most iconic monastery in Spiti, perched dramatically on a hilltop with panoramic views
- **Chicham Bridge** – Asia's highest suspension bridge over a deep gorge a must-visit marvel
- Return to Kaza by evening
- Overnight: Kaza

**Highlight:** The Postcard Day







## DAY 07

### KAZA TO KALPA | (200 KMS, 7 HRS DRIVE)

*Back to warmth, but not back to normal.*

- Early departure from Kaza
- Scenic descent with meal/view breaks en-route
- Optional en-route stop (if accessible): **Gue Monastery** (preserved monk site)
- Stop again at **Khab Confluence** viewpoint (quick photo break)
- Reach **Kalpa** by evening
- Overnight: Kalpa

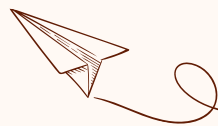
**Highlight:** The relief day — breathe deeper, sleep warmer







## DAY 08



### KALPA TO SHIMLA | (224 KMS, 8 HRS DRIVE)

*The long return — made beautiful.*

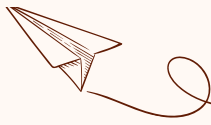
- If weather permits (quick morning stops): Roghi viewpoints / Suicide Point
- Begin return drive via Reckong Peo / Karcham / Jeori / Rampur route
- Tea + stretch breaks at scenic Sutlej valley points
- Arrive **Shimla** by evening
- Board overnight Volvo to Delhi







## DAY 09



### DELHI ARRIVAL | TOUR ENDS

*You return, but Spiti stays with you.*

- Arrive Delhi in the morning (time may vary)
- You're back home — but a part of you stays in Spiti.







Don't just trust us. Watch the proof.

Real travellers. Real stories. Brewed with love.



"Smooth transfers and a beautiful beach resort arranged by Travel Coffee. Everything was perfectly coordinated, and the stay exceeded expectations. Truly appreciate the effort!"

— Preeti Sharma



"Great experience—truly worth giving them a chance. The package they tailored to our budget was commendable and exceeded expectations."

— Harsh Kyal



"Coming from the US, what I loved most was the flexibility. I picked my own hotels and they handled the rides with no pushy schedule, so I could go at my own pace. Best Spiti Valley trip memories: a local Kinnauri wedding, staying at Key Monastery, and meeting monks."

— German Echecopar



"Thank you, Travel Coffee, for curating a wonderful travel experience. Everything was seamless and well-organized. I truly appreciate your support and look forward to planning more trips with you! ❤️"

— Surbhi Sharma



"Travel Coffee truly went above & beyond. Even though we booked from Indonesia without meeting them, we always felt secure their team was available 24/7 & took care of every detail. Shubham personally ensured our comfort throughout the Himachal trip. Their sincerity and local expertise made the journey unforgettable."

— Andre & Angel



"A very good itinerary made by Travel Coffee. We all had a good trip to Manali as well as Shimla. Very supportive staff and management from Travel Coffee 24x7 service is assured by them. Very budget-friendly, as per the likes of the customer."

— Alain Rebello

Travel Coffee





# INCLUSIONS

- ✓ Volvo transfers: Delhi → Shimla → Delhi
- ✓ 4x4 expedition transport in the mountains
- ✓ Accommodation (as per itinerary)
- ✓ Breakfast + dinner as per plan
- ✓ Experienced Local Driver
- ✓ On-ground coordination
- ✓ Required permits (where applicable)
- ✓ Oxygen support for emergency use

# EXCLUSIONS

- ✗ Lunches, personal snacks, drinks
- ✗ Personal expenses, tips, entry tickets (where applicable)
- ✗ Cost escalation due to weather/ roadblocks/ landslides/ snow diversions (if any)
- ✗ Anything not mentioned in the Inclusions is excluded.





## COSTING PER PERSON

**TRIPLE SHARING – ₹32,999 + 5% GST**

**DOUBLE SHARING – ₹34,999 + 5% GST**

Book your seats by depositing an advance of  
**₹5,999 + 5% GST per head.**

## BOOKING PROCESS

To confirm your booking, please **pay ₹5,999 + 5% GST** as the booking amount. The remaining balance must be paid 3–4 days before departure.



**Travel Coffee**



# PAYMENT DETAILS



## Bank Details

Name: Travel Coffee

Account Number: 50200090169370

IFSC: HDFC0000346

Bank: HDFC Bank

GSTIN: 02LUJPS0673R3ZO

**Make Payment Now**

## UPI Details



9816438638@pz



9816438638@pz



9816438638@pz



9816438638@pz



Scan this QR code to  
pay with any UPI app

**Travel Coffee**

# OUR BATCHES



Batch 01                      09th Jan to 17th Jan

Batch 02                      16th Jan to 24th Jan

Batch 03                      23rd Jan to 31st Jan

Batch 04                      30th Jan to 07th Feb

Batch 05                      06th Feb to 14th Feb

Batch 06                      13th Feb to 21st Feb

Batch 07                      20th Feb to 28th Feb

Batch 08                      27th Feb to 07th Mar



# THINGS TO CARRY

## Clothing (Layering System)

- Thermals (top & bottom): 2–3 sets
- Fleece / wool sweater: 1–2
- Down jacket / main winter jacket (heavy)
- Windproof/water-resistant outer layer (recommended)
- Warm trekking pants / thick lowers: 2 (+ thermals inside)
- Socks: 5–6 pairs (include 2 thick woollen pairs)

## Footwear (Must)

- Snow/waterproof shoes/boots with strong grip (no flat soles)
- Extra socks + optional insoles
- Slippers for hotel use

## Health & Safety

- Personal medicines (carry extra)
- Basic medical kit (fever/cold, headache, band-aids, antiseptic)
- ORS/electrolytes
- Any inhaler/allergy meds you need regularly
- Diamox only if prescribed by your doctor (do not self-medicate)

## Head / Hands / Face (Must)

- Warm cap / beanie (cover ears)
- Balaclava / neck warmer / muffler
- Gloves: 1 woollen + 1 waterproof (ideal)
- Sunglasses (snow glare protection)

## Skin & Sun Protection

- Sunscreen (SPF 40–50)
- Lip balm (carry extra)
- Moisturiser + hand cream (dryness is intense)

## Gadgets & Essentials

- Power bank (10,000–20,000 mAh) + chargers
- Torch/headlamp (useful during power cuts)
- Water bottle (1L)
- Toiletries pouch + quick dry towel
- Wet wipes/tissues
- Small day backpack

## Documents & Cash

- Govt ID proof + photocopy
- Cash (ATMs can be unreliable in winter)





# WINTER REALITY CHECK



## *Winter Note*

Spiti in winter is raw, quiet, and unpredictable — roads can change overnight.

If heavy snowfall blocks any spot (especially the high villages), we switch to the best safe alternatives so your day still feels complete.

❌ **What we never do:**  
Overpromise.

✅ **What we always do:** Adapt  
smartly — with safety first.



# CANCELLATION POLICY



- Free Cancellation up to 60 days before the departure date (Booking amount is non-refundable)
- If you're canceling the trip and opting for a refund within 59 days to 45 days of the departure date, then only 10% of the total trip cost (calculated after subtracting the booking amount), along with the booking amount (non-refundable), will be charged as a cancellation fee, and the remaining sum will be refunded.
- If you're canceling the trip and opting for a refund within 44 days to 30 days of the departure date, then 25% of the total trip cost (calculated after subtracting the booking amount), along with the booking amount (non-refundable), will be charged as a cancellation fee, and the remaining sum will be refunded.
- If you're canceling the trip and opting for a refund within 29 days to 15 days of the departure date, then 50% of the total trip cost (calculated after subtracting the booking amount), along with the booking amount (non-refundable), will be charged as a cancellation fee, and the remaining sum will be refunded.
- If you're canceling the trip and opting for a refund within 15 days to 8 days of the departure date, then 75% of the total trip cost (calculated after subtracting the booking amount), along with the booking amount (non-refundable), will be charged as a cancellation fee, and the remaining sum will be refunded.
- If you cancel within 7 days of departure, 100% of the total trip cost will be charged as a cancellation fee (including the non-refundable booking amount). No refund will be applicable. No-shows are not eligible for any refund.

- No refund will be provided in case of issues arising due to government orders, harsh weather conditions, protests, landslides, or any other unforeseen circumstances. In such situations, we usually have a backup plan ready and will proceed accordingly.
- There may be times when we have to cancel certain activities mentioned in the itinerary, but only due to circumstances beyond our control.
- If a trek or expedition/trip has to be aborted midway due to a natural calamity or unforeseen circumstances (such as rain, snowfall, earthquake, landslides, strike, or bandh), no refund will be provided.
- Travel Coffee will not cover any additional expenses incurred due to natural calamities or unforeseen circumstances (such as rain, snowfall, earthquakes, landslides, strikes, or bandhs).
- The cancellation policy varies for popular destinations and peak seasons. Please confirm with your operator for details.





# TERMS & CONDITIONS

- Vouchers are non-transferable and valid only for the services specified herein.
- Any services not specifically requested, confirmed, and mentioned on the vouchers will not be provided.
- All additional charges must be paid directly to the hotels or service providers.
- Please stick to itinerary, anything extra shall be chargeable (at the location itself.)
- Any service unused is non-refundable.
- Cancellations policy differs for popular destinations and also during peak season, kindly confirm with your operator once.
- The company shall not be liable for any damages or charges incurred by travelers under the following circumstances:
  - Natural disasters, war, civil unrest, or alterations/cancellations of the tour itinerary due to such causes.
  - Accidents during transportation or accommodation, or damage caused by fire.
  - Orders from the Indian government or immigration regulations, isolation due to infectious diseases, and tour itinerary alterations or cancellations resulting from such causes.
  - Accidents occurring during the traveler's free time or independent activities.
  - Food poisoning.
  - Theft.